

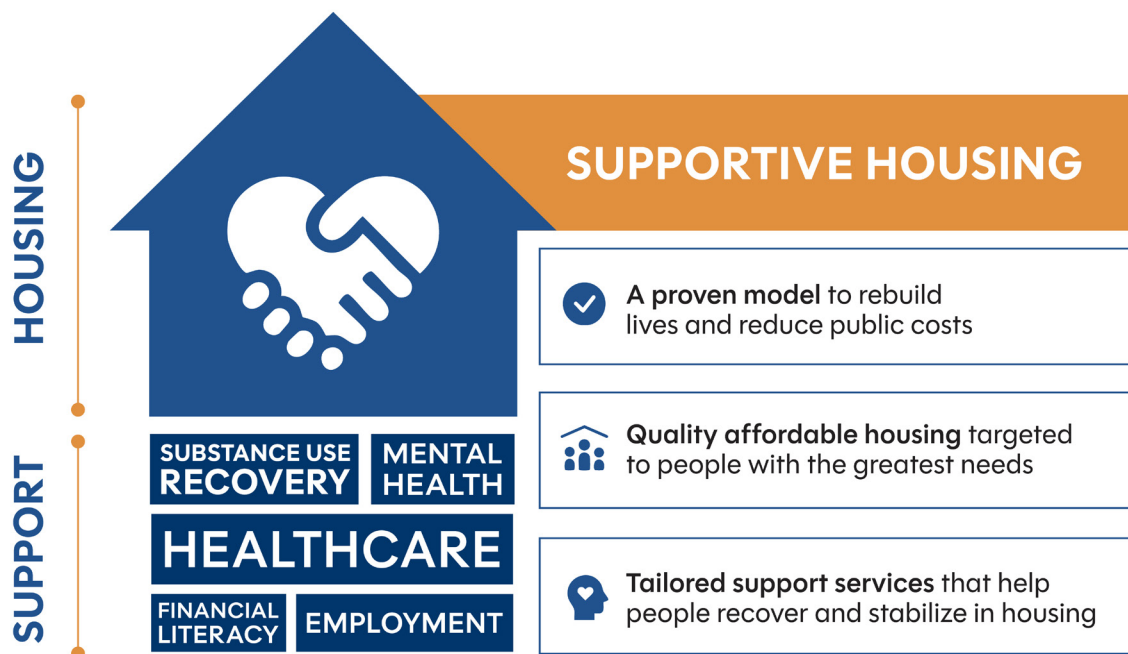


## SUPPORTIVE HOUSING EVIDENCE BRIEFS JUSTICE SYSTEM



Supportive housing is a model of affordable housing that is designed specifically for people who need services to recover and thrive in their community. It serves people who are facing complex physical and behavioral health challenges while also experiencing homelessness, institutionalization, and/or housing instability. People in supportive housing pay 30% of their income toward rent and are accountable to a lease with all of the rights and responsibilities of tenancy.

The services people receive in supportive housing are intensive and delivered using a low staff-to-client ratio. Services are personalized but typically address mental health and addiction recovery, employment/income, and physical healthcare.

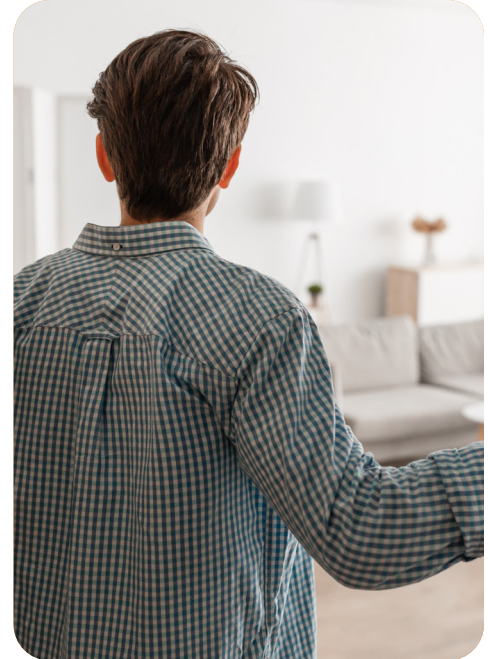


People with histories of incarceration are at greater risk for homelessness, and people experiencing homelessness have a greater risk of law enforcement interaction. Supportive housing can break the cycle of homelessness and incarceration by providing stability and helping to reduce or eliminate interactions with the justice system. Supportive housing has proven to be more cost effective than carceral interventions and offers better outcomes for both the individual and the larger community. **This brief highlights key evidence related to supportive housing and the justice system.**



## People in supportive housing, including those with significant histories of justice involvement, stay housed.

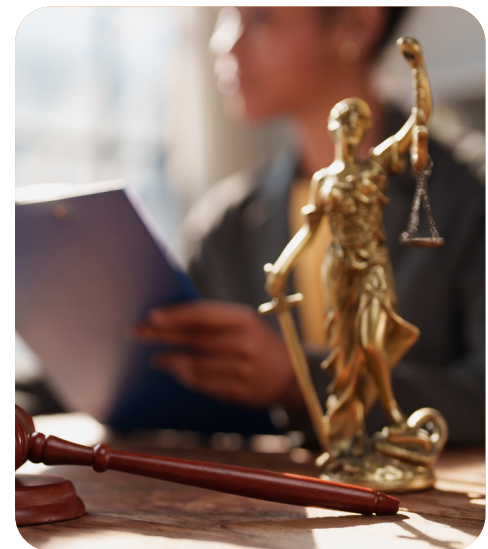
- ✓ In [New York City](#), over 91% of supportive housing tenants with significant histories of homelessness and justice involvement were still housed after one year.
- ✓ In an initiative in [Denver](#) in which all participants had histories of justice involvement, **86%** of those in the treatment group who leased up **stayed housed for at least one year**.
- ✓ In [Los Angeles](#), an initiative connecting people exiting jail with supportive housing saw **82%** of them housed for at least one year.



---

## Supportive housing reduces interactions with law enforcement, such as arrests.

- ✓ In [Mecklenburg County, North Carolina](#), arrests dropped by **59%** for individuals in supportive housing.
- ✓ In [Denver, Colorado](#) police contacts decreased by **34%** and arrests decreased by **40%** for participants in supportive housing relative to those receiving usual care in the community.
- ✓ [Toronto](#) found a **significant reduction in arrests** after two years for those in supportive housing relative to those receiving usual care in the community.





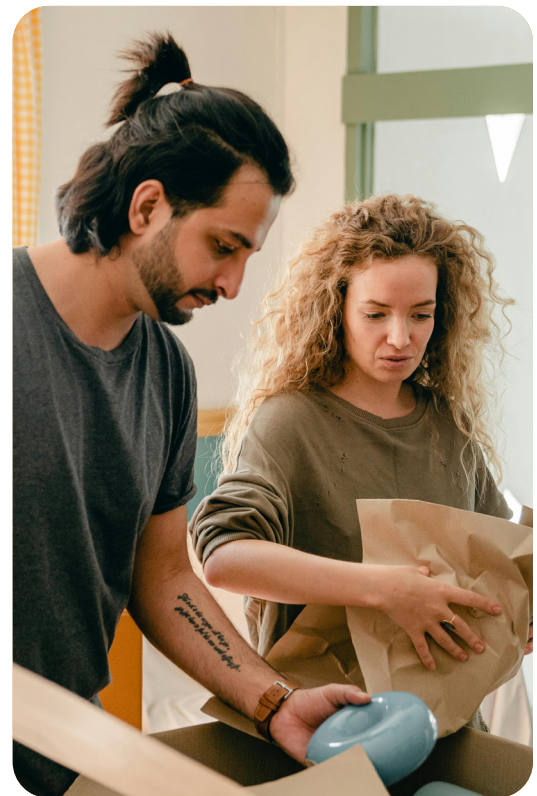
## Supportive housing reduces the use of jail.

- ✓ A [New York City](#) supportive housing initiative serving individuals with frequent experiences of homelessness and jail found that tenants spent an average of **95 fewer days in jail and experienced a 40% reduction in days incarcerated** over a ten-year period.
- ✓ In [Los Angeles](#), 82% of supportive housing tenants stayed housed for at least a year and relative to a comparison group saw a **24-day reduction in jail days**.
- ✓ Participants in a supportive housing initiative in [Denver](#) had a **30% reduction in jail stays** and a **27% reduction in overall jail days** relative to those receiving usual care in the community.

---

## Supportive housing reduces recidivism.

- ✓ The [Community Transition Program](#) (CTP), funded by the Ohio Department of Mental Health and Addiction Services, provides housing and support to people exiting Ohio's prison system who face substance use, behavioral health, and housing challenges. In the most recent year of data, **only 1.1% returned to prison or jail**.
- ✓ In Palm Beach County, Florida it costs [\\$58,000/year](#) to incarcerate someone in the Palm Beach County jail, and [50% return to jail](#) within 3 years post-release. On the other hand, supportive housing has been shown to [reduce jail bookings by 90%](#) at a third of the cost of incarceration.
- ✓ A study of formerly homeless individuals with a psychiatric disability found that supportive housing **significantly lowered incidents of re-offense and recidivism**.





## Supportive housing is a cost-effective alternative to incarceration.

- ✓ The system of mass incarceration costs the government and families of justice-involved people at least \$182 billion every year.
- ✓ An evaluation of programs in Chicago found that providing housing and case management services to adults experiencing chronic homelessness and physical health challenges accrued an estimated **annual cost savings of \$6,307** per person, suggesting that supportive housing has the potential to save the community **nearly \$5.5 billion over the next 10 years in cost-offsets.**
- ✓ A supportive housing program in Pima County, Arizona reduced justice related services by more than 50% for participants in the initiative for 12 or more months, and the average **cost per participant for these services decreased by almost \$6,500.**
- ✓ In Los Angeles, an evaluation of a supportive housing program for individuals exiting the Los Angeles County Jail saw an estimated cost savings of nearly \$17,000 per person just for reduced jail days, **offsetting up to 113% of supportive housing costs** for participants in the first year.





## CONCLUSION

Supportive housing is a proven intervention that can break the destructive cycle of homelessness and incarceration. It has been shown to increase housing stability for those with justice system involvement and reduce rates of recidivism.

Supportive housing benefits both the individual and the larger community by providing personalized services and supports, while saving taxpayer money.

## Read more from the supportive housing evidence brief series

### SUMMARY OF OUTCOMES

---

[READ MORE →](#)



### FAMILIES

---

[READ MORE →](#)



### HEALTH

---

[READ MORE →](#)



### SUBSTANCE USE

---

[READ MORE →](#)



## WORKS CITED

1. U.S. Commission on Civil Rights. (2019). Collateral consequences: The crossroads of punishment, redemption, and the effects on communities (Briefing Report). Washington, DC: Author. <https://www.usccr.gov/files/pubs/2019/06-13-Collateral-Consequences.pdf>
2. Aidala, A. A., McAllister, W., Yomogida, M., & Shubert, V. (2013). Frequent Users Service Enhancement (FUSE) initiative: Evaluation report. Corporation for Supportive Housing. <https://shnny.org/uploads/CSH-FUSE-Evaluation.pdf>
3. Cunningham, M., Hanson, D., Gillespie, S., Pergamit, M., Oneto, A. D., Spauster, P., O'Brien, T., Sweitzer, L., & Velez, C. (2021). Breaking the homelessness jail cycle with Housing First: Results from the Denver Supportive Housing Social Impact Bond initiative (Research Report). Urban Institute. [https://www.urban.org/sites/default/files/publication/104501/breaking-the-homelessness-jail-cycle-with-housing-first\\_1.pdf](https://www.urban.org/sites/default/files/publication/104501/breaking-the-homelessness-jail-cycle-with-housing-first_1.pdf)
4. Hunter, S. B., Scherling, A., Cefalu, M., & McBain, R. K. (2022). Just in Reach Pay for Success: Impact evaluation and cost analysis of a permanent supportive housing program (RAND Research Report No. RRA1758-1). RAND Corporation. [https://www.rand.org/pubs/research\\_reports/RRA1758-1.html](https://www.rand.org/pubs/research_reports/RRA1758-1.html)
5. Housing First Charlotte–Mecklenburg Research & Evaluation Project. (2020). Housing First Charlotte–Mecklenburg final outcomes report 2020: Outcomes evaluation & service utilization study (Final report). UNC Charlotte Urban Institute. <https://ui.charlotte.edu/wp-content/uploads/sites/1003/2024/02/HFCM-Final-Outcomes-Report-2020-Final.pdf>
6. O'Campo, P., Stergiopoulos, V., Nir, P., Levy, M., Misir, V., Chum, A., Arbach, B., Nisenbaum, R., To, M. J., & Hwang, S. W. (2016). How did a Housing First intervention improve health and social outcomes among homeless adults with mental illness in Toronto? Two-year outcomes from a randomised trial. *BMJ open*, 6(9), e010581. <https://doi.org/10.1136/bmjopen-2015-010581>
7. Aidala, A. A., McAllister, W., Yomogida, M., Alatas, H., & Torsiglieri, A. (2023). FUSE 10-year follow-up report: Initial findings (Research Report). Columbia University Mailman School of Public Health & Corporation for Supportive Housing. <https://academiccommons.columbia.edu/doi/10.7916/2zfx-mt68>
8. Ohio Department of Behavioral Health. (n.d.). Community Transition Program. <https://dbh.ohio.gov/community-partners/criminal-justice/re-entry-programs/community-transition-program-sitearea/community-transition-program>
9. Somers JM, Rezansoff SN, Moniruzzaman A, Palepu A, Patterson M (2013) Housing First Reduces Re-offending among Formerly Homeless Adults with Mental Disorders: Results of a Randomized Controlled Trial. *PLoS ONE* 8(9): e72946. <https://doi.org/10.1371/journal.pone.0072946>
10. Vera Institute of Justice. (2015). The price of jails: Measuring the taxpayer cost of local incarceration (Research Report). Vera Institute of Justice. <https://vera-institute.files.svdccdn.com/production/downloads/publications/price-of-jails.pdf>
11. Palm Beach County Criminal Justice Commission. (n.d.). Research and planning brief: Recidivism for Palm Beach County jail inmates. Palm Beach County Public Safety Department. <https://discover.pbc.gov/publicsafety/criminaljustice/PDF/Research%20and%20Planning/Reports/Research%20and%20Planning%20Brief%20-%20Recidivism.pdf>
12. Atkin–Plunk, C. A. & Fallik, S. W. (2022). Evaluation of the Palm Beach County Frequent Users System Engagement (FUSE) Program. Boca Raton, FL: Florida Atlantic University. [https://discover.pbcgov.org/publicsafety/criminaljustice/PDF/Research%20and%20Planning/Reports/PalmFUSE\\_Final\\_Evaluation\\_Report.pdf](https://discover.pbcgov.org/publicsafety/criminaljustice/PDF/Research%20and%20Planning/Reports/PalmFUSE_Final_Evaluation_Report.pdf)
13. Wagner, P. & Rabuy, B. (2017). The price of justice: Bail and the cost of pretrial detention. Prison Policy Initiative. <https://www.prisonpolicy.org/reports/money.html>
14. Basu, A., Kee, R., Buchanan, D., & Sadowski, L. S. (2012). Comparative cost analysis of housing and case management program for chronically ill homeless adults compared to usual care. *Health Services Research*, 47(1 Pt 2), 523–543 <https://doi.org/10.1111/j.1475-6773.2011.01350>